

INTERWEAVE— THE NEWSLETTER FOR

INTERWOVEN PRODUCTIONS CIC



Specialists in
community-led
Creative Placemaking

*Helping you find your place –
in your place*

In this issue: -

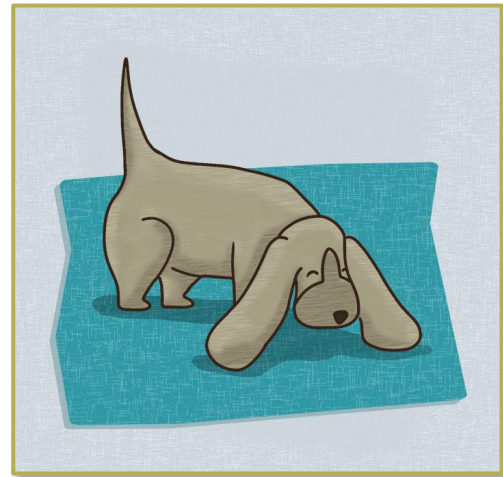
- **#ConnectMe** – Place-based resources to use from home!
- **Take a part** – The Interwoven Participation framework
- **NEW - Burnthouse Lane Squilometre** – Thrilled to be starting work on the streets of Burnthouse Lane Estate with thanks to Devon County Council.

#ConnectMe Resources

We were very pleased to receive an ECC award to create two FREE place-based resources for you.

We believe that EVERY place - every building, every hill, every tree and every stream – has a story.

You don't need to live in a grand Georgian house to have your very own unique story to tell. You just need to know how to "see" your place differently.



This is Spigot the Bloodhound who helps guide our Age 7-12 readers to uncover the secrets of their own home in Pack 1!

Our [#ConnectMe](#) resource packs are designed to allow you to do just this. You can access all the information you need just by looking again at your place. What's more you're invited to get a little creative with your findings and guided through how to bring your stories to life and share them online. We can't wait to see them!

You can download the first two packs, Pack 1 for **Ages 7-12** and Pack 2 for **Ages 13-adult** NOW!

<http://www.interwovenproductions.com/connectme.html>

Issue 7 May 2020

info@interwovenproductions.com

Take a part – Introducing the Interwoven Participation Framework

We've written in the past that all performance is necessarily an act of communion between all the myriad of players who allow it to happen. As we've grown and developed we've taken that notion to heart and now all of our work is commissioned by the communities we serve. In return they are our advocates and participants and we are proud to work alongside them.

Working in this way for the last five years has allowed us to create a framework of participatory roles that allow community-commissioned Creative Placemaking to happen all over our City.

We have developed a Participation Framework so that you can choose your own entry point and plot your own progression.

Some roles give you access to funded training, others give maximum flexibility in terms of time commitment. Some offer commission opportunities, others are minimal online contact only. What they ALL have in common is that ...

... they allow us – together - to create a world where people are better connected to each other and to their place.

If that's something you could get excited about - come join us:-

<http://www.interwovenproductions.com/interweaving---take-a-part.html>

NEW [Burnhouse Lane Squilometre](#)

With huge thanks to Devon County Council we are thrilled to have launched a brand new Creative Placemaking initiative in the Burnhouse Lane area.



As with all of our *Squilometres* this will be run by a "super participant" – a local resident who will receive Interwoven training in heritage interpretation, document research, oral history recordings, community animation and event organisation. They'll work within their own neighbourhood running one street project after another, around and around their *Squilometre* – ad infinitum. Each street finale will invite participants to pay-it-forward to allow the next one to happen. In this way each neighbourhood can not only commission its own cultural activity but can support it too.

Often, a street Steering Group, or Pod, will choose to commission a participatory artist – a visual artist or performer - and we're pleased to be able to introduce them to a range of Interwoven artists who have agreed to work in this way according to [Interwoven Policy](#) and a Consultants' Agreement. If you're interested in joining us and working with our communities in this way, let us know!

<http://www.interwovenproduction.s.com/becoming-an-associate.html>

Issue 7 May 2020

info@interwovenproductions.com